

MADE IN HOLLAND



walker

Campingstyle



## COLLECTION 2025



Concept 240/280 PVC



Touring Plus



Sunflex



Active





## WALKER, THE STORY OF A FAMOUS BRAND FOR YOUR CARAVAN AWNING!

Mention the name Walker and many people will say: "Yes, I know that brand!"

When, in 1954, spending holidays became possible for more and more people Walker started production of camping tents. From the beginning the Walker name was famous for design and production in Deurne, Holland. Now in these days Walker still is the top brand that has made many camping holidays memorable.

When tradition and innovation meet, product quality is guaranteed. Walker has 60 years' experience in researching and developing quality materials, innovative designs and advanced technology to produce the most comfortable high performance awnings on the market.

### WALKER FACTORY TAILORED SIZES!

If your caravan's dimensions fall between the Walker standard sizes the Walker Factory-Tailored service will ensure your new Walker awning provides a perfect fit!

Information about Walker products is also available on our website: [www.walker-awnings.uk](http://www.walker-awnings.uk)

We wish you enjoyment and pleasure in 2025 and beyond with your new Walker awning!

Sincerely,

Dianne and Ivo van Baars / Owners



## Concept 240+280 Easy Door



NOW FROM  
£ 2129,-

Go to website...



## Made of PVC 'All Weather'!

### FEATURES CONCEPT 240/280

**Depth:** 240 cm or 280 cm • **Roof:** PVC All Weather, both sides coated: 525 g/m<sup>2</sup> • **Walls + window blinds:** PVC All Weather, both sides coated: 450 g/m<sup>2</sup> • **Frame:** steel MAX; all steel roof poles are 28 mm, others are 25 mm. Easy-PowerGrips available at extra cost • **Double mudflap around the awning** • **Ventilation:** in the ridge at the front and in both sidewalls **All windows with window blinds with vertical zippers** • **Panels:** all panels can be rolled down or zipped out. Sidepanels are interchangeable **Front walls interchangeable:** Easy-Door! • **Weight:** size 900 cm approx. 60 kg • **Annex De Luxe:** fits both sides • **Easy-Setup lock brackets:** included! **Curtains, draught cloth + wheel arch cover:** included! **Luxury accessory bag:** included! • **Fits aerodynamic shaped caravans** **Guarantee:** 24 months

### OPTIONAL EXTRAS

- Roof lining Concept
- Patio front sun canopy (incl. sidewalls WS-5 in colour Concept)
- Castel front sun canopy / Plus-package
- Sidewalls for Castel WS-5 in colour Concept; with window
- Easy-Lock stormstraps (awning/Patio: 2-straps; Castel/Patio: 3-straps)
- **Jolax awning carpet - Special Discount!** (page 22)
- Annex De Luxe with door: fits both sides
- Innertent for annexe
- Windbreak WS-5
- Verandah pole
- Window canopy
- Awning lampshade and tablecloth
- Side canopy Solair
- **Easy PowerGrips: Optional on steel frames at extra costs:**

Type	Easy PowerGrips	Extra costs
885 - 960	10 pcs.	£ 55,-
975 - 1160	12 pcs.	£ 66,-

### Concept 240 / 280, steel frame MAX

Type	A-measurement (cm)	List Price £		DISCOUNT PRICE £	
		240	280	240	280
885*	870-900	2839,-	3132,-	2129,-	2349,-
900	886-915	2839,-	3132,-	2129,-	2349,-
915*	900-930	2919,-	3252,-	2189,-	2439,-
930	916-945	2919,-	3252,-	2189,-	2439,-
945*	930-960	3026,-	3386,-	2269,-	2539,-
960	946-975	3026,-	3386,-	2269,-	2539,-
975*	960-990	3172,-	3532,-	2379,-	2649,-
990	976-1005	3172,-	3532,-	2379,-	2649,-
1005*	990-1020	3239,-	3586,-	2429,-	2689,-
1020	1006-1035	3239,-	3586,-	2429,-	2689,-
1035*	1020-1050	3332,-	3652,-	2499,-	2739,-
1050	1036-1065	3332,-	3652,-	2499,-	2739,-
1065*	1050-1080	3399,-	3732,-	2549,-	2799,-
1080	1066-1095	3399,-	3732,-	2549,-	2799,-
1110	1096-1125	3679,-	4066,-	2759,-	3049,-
1140	1126-1155	3679,-	4066,-	2759,-	3049,-
1160	1146-1175	3679,-	4066,-	2759,-	3049,-
Roof lining 885-930		346,-	372,-	259,-	279,-
Roof lining 945-1020		372,-	386,-	279,-	289,-
Roof lining 1035-1160		386,-	412,-	289,-	309,-
Annexe De Luxe		746,-		559,-	
Innertent annexe		146,-		109,-	
Easy-Lock stormstraps, 2 pcs.		-		24,95	

\*Walker factory tailored sizes

### WALKER FACTORY TAILORED SIZES!

In our Walker database at [www.walker-awnings.uk](http://www.walker-awnings.uk) you can find the correct Walker size for your caravan!

Not sure about the right size?

Is our size not in the list?

Do you have a caravan older than 10 years?

Then determine the correct size of your caravan in the following way...

**1** -First put your caravan on flat ground.

- Start measuring at point A and go 185 cm's straight up to the awning rail to point B.

- Continue measuring from point B to point C.

- The complete length from point A → B → C is the exact A-size of your caravan. Check the Walker size chart which size suits your caravan best.

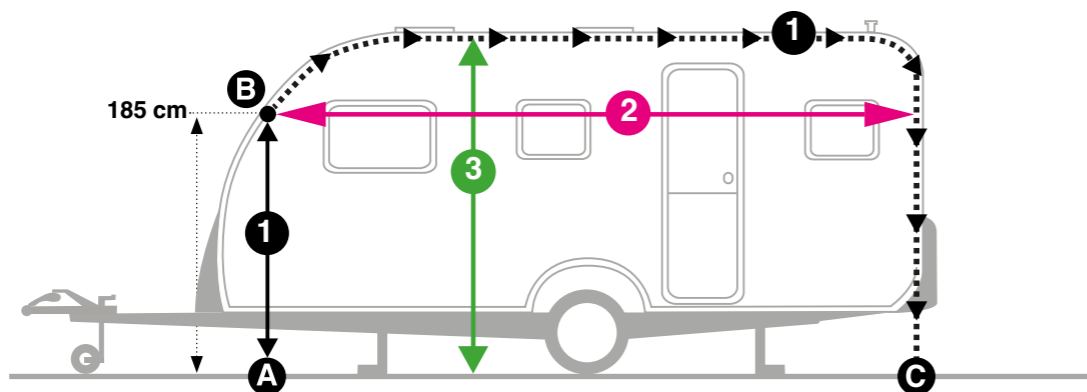
**3** Measure the height of the awning rail from the ground.

**1** (A → B → C) = \_\_\_\_\_ cm

**2** = \_\_\_\_\_ cm

**3** = \_\_\_\_\_ cm

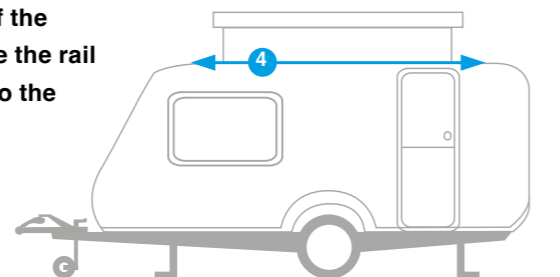
**2** Start measuring the width of the caravan on height 185 cm; the distance from point B horizontally (NOT through the awning rail) through to the back of the trailer at a height of 185 cm.



For pop-up caravans:

**4** Also measure the length of the 'straight' track, so measure the rail from the end of the curve to the beginning of the curve.

**4** = \_\_\_\_\_ cm



Go to website...







Go to website...



Go to website...



**Awning and sun canopy in one!**

**FEATURES PIONEER 240**

**Depth:** 240 cm • **Roof:** Ten Cate All Season coated polyester: 260 g/m<sup>2</sup>  
**Walls:** Ten Cate All Season coated polyester: 260 g/m<sup>2</sup> • **Frame:** steel 25 mm; optional with Easy-PowerGrips at extra costs. From size 885 cm: 2 extra roof support poles. From size 975 cm: 2 extra front legs • **Optional:** 28 mm alloy frame with Easy PowerGrips or fiberglass frame • **Ventilation:** in front wall panel when fitted • **Panels:** all panels can be rolled down or zipped out • **Front walls interchangeable:** Easy-Door! • **Easy-Setup lock brackets:** included! • **Curtains, draught cloth + wheel arch cover:** included! • **Luxury accessory bag:** included! • **Guarantee:** 24 months  
**Fits aerodynamic shaped caravans** • **Weight:** size 900 approx. 38 kg

**OPTIONAL EXTRAS**

- Castel front sun canopy + adapterset / Plus-package
- Sidewalls for Castel WS-7 in colour Pioneer All Season, with window
- Patio front sun canopy (incl. sidewalls WS-7 in colour Pioneer)
- Easy-Lock stormstraps (awning/Patio: 2-straps; Castel/Patio: 3-straps)
- **Jolax awning carpet - Special Discount!** (page 22)
- Windbreak WS-7
- Verandah pole
- Window canopy
- Awning lampshade, tablecloth
- **Easy PowerGrips: Optional on steel frames at extra costs:**

Type	Easy PowerGrips	Extra costs
795 - 870	8 pcs.	£ 44,-
885 - 960	10 pcs.	£ 55,-
975 - 1080	12 pcs.	£ 66,-

**ALSO AVAILABLE FOR (alloy frame):** List Price £ **DISCOUNT PRICE £**

ERIBA FEELING 380/425/430/450*:	2332,-	<b>1749,-</b>
ERIBA FEELING 470*:	2426,-	<b>1819,-</b>
ERIBA FEELING 442*:	2506,-	<b>1879,-</b>
*Dripstop for Feeling:	-	<b>76,-</b>
ERIBA TOURING 630/642:	2319,-	<b>1739,-</b>
TRIGANO SILVER 420/430/		
TREND 420/TREND 442	2332,-	<b>1749,-</b>

**Pioneer 240 All Season, steel frame**

Type	A-measurement (cm)	List Price £	DISCOUNT PRICE £
795*	780-810	1759,-	<b>1319,-</b>
810	796-825	1759,-	<b>1319,-</b>
825*	810-840	1852,-	<b>1389,-</b>
840	826-855	1852,-	<b>1389,-</b>
855*	840-870	1892,-	<b>1419,-</b>
870	856-885	1892,-	<b>1419,-</b>
885*	870-900	1972,-	<b>1479,-</b>
900	886-915	1972,-	<b>1479,-</b>
915*	900-930	2052,-	<b>1539,-</b>
930	916-945	2052,-	<b>1539,-</b>
945*	930-960	2106,-	<b>1579,-</b>
960	946-975	2106,-	<b>1579,-</b>
975*	960-990	2172,-	<b>1629,-</b>
990	976-1005	2172,-	<b>1629,-</b>
1005*	990-1020	2212,-	<b>1659,-</b>
1020	1006-1035	2212,-	<b>1659,-</b>
1035	1020-1050	2292,-	<b>1719,-</b>
1050	1036-1065	2292,-	<b>1719,-</b>
1065	1050-1080	2319,-	<b>1739,-</b>
1080	1066-1095	2319,-	<b>1739,-</b>
Extra costs alloy 780-870		138,-	<b>103,-</b>
Extra costs alloy 885-960		150,-	<b>112,-</b>
Extra costs alloy 975-1080		160,-	<b>120,-</b>
Extra costs fiberglass MAX 780 - 870		180,-	<b>135,-</b>
Extra costs fiberglass MAX 885 - 960		260,-	<b>195,-</b>
Extra costs fiberglass MAX 975 - 1080		307,-	<b>230,-</b>
Easy-Lock stormbanden, 2-delig		-	<b>24,95</b>

\*Walker factory tailored sizes

**Depth 250 cm!**

**FEATURES DYNAMIC**

**Depth:** 250 cm • **Roof:** Ten Cate All Season coated polyester with print design: 260 g/m<sup>2</sup> • **Walls:** Ten Cate All Season coated polyester: 260 g/m<sup>2</sup> • **Frame:** steel 25 mm MAX; 3 roof support poles 28 mm steel; optional with Easy-PowerGrips at extra costs. From type 885 cm, 2 extra roof support poles. From size 975 cm, 2 extra front legs • **Optional:** fiberglass frame MAX • **Ventilation:** in the ridge at the front and in 1 sidewall  
**Panels:** all panels can be rolled down or zipped out; sidepanels are interchangeable • **Easy-Setup lock brackets:** included! • **Curtains, draught cloth + wheel arch cover:** included! • **Luxury accessory bag:** included!  
**Guarantee:** 24 months • **Fits aerodynamic shaped caravans**  
**Weight:** size 900 cm approx. 45 kg

**OPTIONAL EXTRAS**

- Patio front sun canopy (incl. sidewalls WS-7 in colour Dynamic)
- Castel front sun canopy / Plus-package
- Sidewalls for Castel WS-7 in colour Dynamic; with window
- Easy-Lock stormstraps (awning/Patio: 2-straps; Castel/Patio: 3-straps)
- **Jolax awning carpet - Special Discount!** (page 22)
- Annexe De Luxe with door: fits both sides
- Innertent for annexe
- Windbreak WS-7
- Verandah pole
- Window canopy
- Awning lampshade and tablecloth
- Side canopy Solair
- **Fiberglass MAX frame: roof poles 30,5 mm**
- **Easy PowerGrips: Optional on steel frames at extra costs:**

Type	Easy PowerGrips	Extra costs
825 - 870	8 pcs.	£ 44,-
885 - 960	10 pcs.	£ 55,-
975 - 1160	12 pcs.	£ 66,-

**ALSO AVAILABLE FOR:** List Price £ **DISCOUNT PRICE £**

Hobby Beachy 360 steel MAX:	2106,-	<b>1579,-</b>
Hobby Beachy 360 fiber MAX:	2399,-	<b>1799,-</b>
Hobby Beachy 420 steel MAX:	2226,-	<b>1669,-</b>
Hobby Beachy 420 fiber MAX:	2519,-	<b>1889,-</b>
Hobby Beachy 450 steel MAX:	2332,-	<b>1749,-</b>
Hobby Beachy 450 fiber MAX:	2626,-	<b>1969,-</b>

See also page 17

**Dynamic 250, steel frame MAX**

Type	A-measurement (cm)	List Price £	DISCOUNT PRICE £
825	810-840	2079,-	<b>1559,-</b>
840	826-855	2079,-	<b>1559,-</b>
855*	840-870	2186,-	<b>1639,-</b>
870	856-885	2186,-	<b>1639,-</b>
885*	870-900	2266,-	<b>1699,-</b>
900	886-915	2266,-	<b>1699,-</b>
915*	900-930	2346,-	<b>1759,-</b>
930	916-945	2346,-	<b>1759,-</b>
945*	930-960	2399,-	<b>1799,-</b>
960	946-975	2399,-	<b>1799,-</b>
975*	960-990	2426,-	<b>1819,-</b>
990	976-1005	2426,-	<b>1819,-</b>
1005*	990-1020	2466,-	<b>1849,-</b>
1020	1006-1035	2466,-	<b>1849,-</b>
1035	1020-1050	2559,-	<b>1919,-</b>
1050	1036-1065	2559,-	<b>1919,-</b>
1065	1050-1080	2639,-	<b>1979,-</b>
1080	1066-1095	2639,-	<b>1979,-</b>
1110	1096-1125	2839,-	<b>2129,-</b>
1140	1126-1155	2839,-	<b>2129,-</b>
1160	1146-1175	2839,-	<b>2129,-</b>
Extra costs fiberglass MAX 780 - 870		279,-	<b>209,-</b>
Extra costs fiberglass MAX 885 - 960		359,-	<b>269,-</b>
Extra costs fiberglass MAX 975 - 1080		412,-	<b>309,-</b>
Extra costs fiberglass MAX 1110 - 1160		492,-	<b>369,-</b>
Annexe De Luxe		746,-	<b>559,-</b>
Innertent for annexe		-	<b>109,-</b>
Easy-Lock stormstraps, 2 pcs.		-	<b>24,95</b>

\*Walker factory tailored sizes

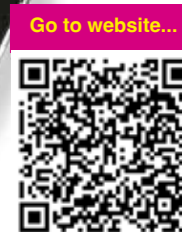


# Ellips 280

NOW FROM  
£ 2199,-

# Scandic 300

NOW FROM  
£ 1729,-



**Optional heavy duty PVC ground sheet available!**

**Depth 300 cm!**

## FEATURES ELLIPS 280

**Depth:** 280 cm • **Roof:** Ten Cate All Season coated polyester with print design: 260 g/m<sup>2</sup> • **Walls:** Ten Cate All Season coated polyester: 260 g/m<sup>2</sup> • **Frame:** steel 25 mm MAX; 3 roof support poles 28 mm steel; optional with Easy-PowerGrips at extra costs. From size 885 cm, 2 extra roof support poles. From size 975 cm, 2 extra front legs

**Ventilation:** in the ridge at the front and in 1 sidewall

**Panels:** all panels can be rolled down or zipped out; sidepanels are interchangeable

**Easy-Setup lock brackets:** included! • **Curtains, draught cloth + wheel arch cover:** included! • **Luxury accessory bag:** included! • **Guarantee:** 24 months • **Fits aerodynamic shaped caravans**

**Weight:** size 900 cm approx. 46 kg

## Ellips 280 steel frame MAX

Type	A-measurement (cm)	List Price £	DISCOUNT PRICE £	PVC ground List Price £	DISCOUNT PRICE £
885*	870-900	2932,-	2199,-	386,-	289,-
900	886-915	2932,-	2199,-	386,-	289,-
915*	900-930	2999,-	2249,-	412,-	309,-
930	916-945	2999,-	2249,-	412,-	309,-
945*	930-960	3079,-	2309,-	426,-	319,-
960	946-975	3079,-	2309,-	426,-	319,-
975*	960-990	3146,-	2359,-	452,-	339,-
990	976-1005	3146,-	2359,-	452,-	339,-
1005*	990-1020	3146,-	2389,-	452,-	339,-
1020	1006-1035	3146,-	2389,-	452,-	339,-
1035*	1020-1050	3306,-	2479,-	479,-	359,-
1050	1036-1065	3306,-	2479,-	479,-	359,-
1065*	1050-1080	3306,-	2529,-	479,-	359,-
1080	1066-1095	3306,-	2529,-	479,-	359,-
Annexe De Luxe		746,-	559,-		
Innertent for annexe		146,-	109,-		
Stormstraps; 2 pcs.		-	24,95		

## PVC ground

## Zip-on sun canopy Ellips 280

Type	List Price £	DISCOUNT PRICE £
885*	1132,-	849,-
900	1132,-	849,-
915*	1199,-	899,-
930	1199,-	899,-
945*	1239,-	929,-
960	1239,-	929,-
975*	1266,-	949,-
990	1266,-	949,-
1005*	1266,-	949,-
1020	1266,-	949,-
1035*	1292,-	969,-
1050	1292,-	969,-
1065*	1292,-	969,-
1080	1292,-	969,-
Curtains		49,-
Stormstraps, 2 pcs		24,95
Stormstraps, 3 pcs		33,95

\*Walker factory tailored sizes

## OPTIONAL EXTRAS

- PVC groundsheet
- Zip-on sun canopy with sidewalls with window
- Curtains sun canopy
- Easy-Lock stormstraps (awning: 2-straps;

- suncanopy: 2 -straps/3-straps)
- **Jolax awning carpet - Special Discount!** (page 22)
- Annexe De Luxe with door: fits both sides
- Innertent for annexe
- Windbreak WS-7
- Verandah pole

- Window canopy
  - Awning lampshade, tablecloth
  - Side canopy Solair
  - **Easy PowerGrips: Optional on steel frames at extra costs:**
- | Type       | Easy PowerGrips | Extra costs |
|------------|-----------------|-------------|
| 885 - 960  | 10 pcs.         | £ 55,-      |
| 975 - 1080 | 12 pcs.         | £ 66,-      |
- **Easy PowerGrips sun canopy/10 pcs/Extra costs:** £ 55,

## FEATURES SCANDIC 300

**Depth:** 300 cm • **Roof:** Ten Cate All Season coated polyester with print design: 260 g/m<sup>2</sup> • **Walls:** Ten Cate All Season coated polyester: 260 g/m<sup>2</sup> • **Frame:** steel 25 mm MAX; 3 roof support poles 28 mm steel; optional with Easy-PowerGrips at extra costs. From type 885 cm, 2 extra roof support poles. From size 975 cm, 2 extra front legs • **Optional:** fiberglass frame MAX • **Ventilation:** in the ridge at the front and in 1 sidewall

**Panels:** all panels can be rolled down or zipped out; sidepanels are interchangeable

**Easy-Setup lock brackets:** included! • **Curtains, draught cloth + wheel arch cover:** included! • **Luxury accessory bag:** included! • **Guarantee:** 24 months • **Fits aerodynamic shaped caravans** • **Weight:** size 900 cm approx. 48 kg

## OPTIONAL EXTRAS

- Patio front sun canopy (incl. sidewalls WS-1 in colour Scandic)
- Castel front sun canopy / Plus-package
- Sidewalls for Castel WS-1 in colour Scandic; with window
- Easy-Lock stormstraps (awning/Patio: 2-straps; Castel/Patio: 3-straps)
- **Jolax awning carpet - Special Discount!** (page 22)
- Annexe De Luxe with door: fits both sides
- Innertent for annexe
- Windbreak WS-1
- Verandah pole
- Window canopy
- Awning lampshade, tablecloth
- Side canopy Solair
- **Fiberglass MAX frame: roof poles 30,5 mm**
- **Easy PowerGrips: Optional on steel frames at extra costs:**

Type	Easy PowerGrips	Extra costs
855 - 870	8 pcs.	£ 44,-
885 - 960	10 pcs.	£ 55,-
975 - 1160	12 pcs.	£ 66,-

**ALSO AVAILABLE FOR:** List Price £ DISCOUNT PRICE £

Hobby Beachy 450 steel MAX: 2466,- **1849,-** See also  
Hobby Beachy 450 fiber MAX: 2755,- **2066,-** page 17

## Scandic 300, steel frame MAX

Type	A-measurement (cm)	List Price £	DISCOUNT PRICE £
855*	840-870	2306,-	1729,-
870	856-885	2306,-	1729,-
885*	870-900	2452,-	1839,-
900	886-915	2452,-	1839,-
915*	900-930	2532,-	1899,-
930	916-945	2532,-	1899,-
945*	930-960	2586,-	1939,-
960	946-975	2586,-	1939,-
975*	960-990	2666,-	1999,-
990	976-1005	2666,-	1999,-
1005*	990-1020	2719,-	2039,-
1020	1006-1035	2719,-	2039,-
1035*	1020-1050	2772,-	2079,-
1050	1036-1065	2772,-	2079,-
1065*	1050-1080	2812,-	2109,-
1080	1066-1095	2812,-	2109,-
1110	1096-1125	2986,-	2239,-
1140	1126-1155	2986,-	2239,-
1160	1146-1175	2986,-	2239,-
Extra costs fiberglass MAX 855 - 870		279,-	209,-
Extra costs fiberglass MAX 885 - 960		352,-	269,-
Extra costs fiberglass MAX 975 - 1080		412,-	309,-
Extra costs fiberglass MAX 1110 -1160		492,-	369,-
Annexe De Luxe:		746,-	559,-
Innertent for annexe		146,-	109,-
Easy-Lock stormstraps, 2 pcs.		-	24,95

\*Walker factory tailored sizes



NOW FROM  
£ 1929,-

NOW FROM  
£ 2579,-



Go to website...



Large space with extra panoramic windows!

### FEATURES ATRIUM 300

**Depth:** 300 cm • **Roof:** Ten Cate All Season coated polyester with print design: 260 g/m<sup>2</sup> • **Walls:** Ten Cate All Season coated polyester: 260 g/m<sup>2</sup> • **Frame:** steel 25 mm MAX; 3 roof support poles 28 mm; optional with Easy-PowerGrips at extra costs. From type 885 cm: 2 extra roof support poles. From type 975 cm: 2 extra front legs • **Optional:** fiberglass frame MAX • **Ventilation:** in the ridge at the front and in 1 sidewall • **Panels:** all panels can be rolled down or zipped out; sidepanels are interchangeable • **Front walls interchangeable:** Easy-Door! • **Easy-Setup lock brackets:** included! • **Curtains, draught cloth + wheel arch cover:** included! • **Luxury accessory bag:** included! • **Guarantee:** 24 months • **Fits aerodynamic shaped caravans** • **Weight:** size 900 cm approx. 48 kg

### OPTIONAL EXTRAS

- Patio front sun canopy (incl. sidewalls WS-1 in colour Atrium)
- Castel front sun canopy / Plus-package
- Sidewalls for Castel WS-1 in colour Atrium, with window
- Easy-Lock stormstraps (awning/Patio: 2-straps; Castel/Patio: 3-straps)
- **Jolax awning carpet - Special Discount!** (page 22)
- Annexe De Luxe with door: fits both sides
- Innertent for annexe
- Windbreak WS-1
- Verandah pole
- Window canopy
- Awning lampshade, tablecloth
- Side canopy Solair
- **Fiberglass MAX frame: roof poles 30,5 mm**
- **Easy PowerGrips: Optional on steel frames at extra costs:**

Type	Easy PowerGrips	Extra costs
825 - 870	8 pcs.	£ 44,-
885 - 960	10 pcs.	£ 55,-
975 - 1160	12 pcs.	£ 66,-

### Atrium 300, steel frame MAX

Type	A-measurement (cm)	List Price £	DISCOUNT PRICE £
825*	810-840	2572,-	1929,-
840	826-855	2572,-	1929,-
855*	840-870	2666,-	1999,-
870	856-885	2666,-	1999,-
885*	870-900	2812,-	2109,-
900	886-915	2812,-	2109,-
915*	900-930	2932,-	2199,-
930	916-945	2932,-	2199,-
945*	930-960	3039,-	2275,-
960	946-975	3039,-	2275,-
975*	960-990	3106,-	2329,-
990	976-1005	3106,-	2399,-
1005*	990-1020	3146,-	2359,-
1020	1006-1035	3146,-	2359,-
1035*	1020-1050	3306,-	2479,-
1050	1036-1065	3306,-	2479,-
1065*	1050-1080	3372,-	2529,-
1080	1066-1095	3372,-	2529,-
1110	1096-1125	3572,-	2679,-
1140	1126-1155	3572,-	2679,-
1160	1146-1175	3572,-	2679,-
Extra costs fiberglass MAX 825 - 870		279,-	209,-
Extra costs fiberglass MAX 885 - 960		352,-	269,-
Extra costs fiberglass MAX 975 - 1080		412,-	309,-
Extra costs fiberglass MAX 1110 - 1160		492,-	369,-
Annexe De Luxe:		746,-	559,-
Innertent annexe		146,-	109,-
Easy-Lock stormstraps, 2 pcs.		-	24,95

\*Walker factory tailored sizes

Walker collection 2025



Go to website...



The ultimate awning for residential caravanning!

### SPECIFICATIES PALLADIUM 350

**Depth:** 350 cm • **Roof:** Ten Cate All Season coated polyester with print design: 260 g/m<sup>2</sup> • **Walls:** Ten Cate All Season coated polyester: 260 g/m<sup>2</sup> • **Frame:** only steel 25 mm available; optional with Easy-PowerGrips at extra costs. From size 885 cm: 2 extra roof support poles. From size 975 cm: 2 extra front legs • **Ventilation:** in the ridge at the front and in 1 side panel • **Panels:** all panels can be rolled down or zipped out; sidepanels are interchangeable • **Front walls interchangeable:** Easy-Door! • **Easy-Setup lock brackets:** included! • **Curtains, draught cloth + wheel arch cover:** included! • **Luxury accessory bag:** included! • **Guarantee:** 24 months • **Fits aerodynamic shaped caravans** • **Weight:** size 900 approx. 56 kg

### OPTIONAL EXTRAS

- Extra partition wall to create L-shaped area
- Extra front wall + door + curtains
- Patio front sun canopy (incl. sidewalls WS-1 in colour Palladium)
- Castel front sun canopy / Plus-package
- Sidewalls for Castel WS-1 in colour Palladium; with window
- Easy-Lock stormstraps (Palladium: 2 x 2-straps; Patio: 2-straps; Castel/Patio: 3-straps)
- **Jolax awning carpet - Special Discount!** (page 22)
- Annexe De Luxe with door: fits both sides
- Innertent for annexe
- Windbreak WS-1
- Verandah pole
- Window canopy
- Awning lampshade, tablecloth
- Side canopy Solair
- **Easy PowerGrips: Optional on steel frames at extra costs:**

Type	Easy PowerGrips	Extra costs
915 - 960	15 pcs.	£ 82,50
975 - 1160	19 pcs.	£ 104,50

### Palladium 350 (WITHOUT partition wall)

Type	A-measurement (cm)	List Price £	DISCOUNT PRICE £
915*	900-930	3439,-	2579,-
930	916-945	3439,-	2579,-
945*	930-960	3559,-	2669,-
960	946-975	3559,-	2669,-
975*	960-990	3639,-	2729,-
990	976-1005	3639,-	2729,-
1005*	990-1020	3719,-	2789,-
1020	1006-1035	3719,-	2789,-
1035*	1020-1050	3839,-	2879,-
1050	1036-1065	3839,-	2879,-
1065*	1050-1080	3932,-	2949,-
1080	1066-1095	3932,-	2949,-
1110	1096-1125	4159,-	3119,-
1140	1126-1155	4159,-	3119,-
1160	1146-1175	4159,-	3119,-
Partition wall + curtains		186,-	139,-
Extra front wall + curtains		399,-	299,-
Annexe De Luxe		746,-	559,-
Innertent annexe		146,-	109,-
Easy-Lock stormstraps, 2 x 2 pcs.		-	49,90

\*Walker factory tailored sizes

Walker collection 2025





**NOW FROM**  
**£ 889,-**

**Specially designed for those on a seasonal pitch!**

**FRONT SUNCANOPY PATIO!**

This front suncanopy Patio is specially designed for those caravanners who have their awning on a seasonal pitch.

The special heavy duty steel frame, with extra roof bars, make it a very strong canopy.

All sleeves for the poles are fitted with zips.

The Patio is supplied with 2 zip out side panels with window as standard.

Easy-PowerGrips, stormstraps and curtains for the sidewalls are optional at extra cost.

The Patio is provided with tentrail and 3 poles with a hook for mounting the Patio on the caravan directly (sidewalls cannot be used).

**OPTIONAL EXTRAS**

- Easy-Lock stormstraps (2-straps sidewall / 3-straps front)
- Curtains
- Easy Powergrips optional on steel frame at extra costs:

Easy PowerGrips		Extra costs
795-1080	10 pcs.	£ 55,-
1110-1160	14 pcs.	£ 77,-

The two side walls are supplied in the colors of the awning.

WS-1 - in the colours of Walker Scandic 300, Atrium 300, Palladium 350

WS-5 - PVC / in the colours of Walker Concept 240/280

WS-7 - in the colours of Walker Pioneer 240, Dynamic 250

**Patio steel frame**

Type	A-measurement (cm)	A-B in cm	List Price £	DISCOUNT PRICE £
795*	780-810	178	1186,-	889,-
810	796-825	178	1186,-	889,-
825*	810-840	193	1306,-	979,-
840	826-855	193	1306,-	979,-
855*	840-870	208	1319,-	989,-
870	856-885	208	1319,-	989,-
885*	870-900	223	1346,-	1009,-
900	886-915	223	1346,-	1009,-
915*	900-930	238	1359,-	1019,-
930	916-945	238	1359,-	1019,-
945*	930-960	253	1372,-	1029,-
960	946-975	253	1372,-	1029,-
975*	960-990	268	1412,-	1059,-
990	976-1005	268	1412,-	1059,-
1005*	990-1020	268	1412,-	1059,-
1020	1006-1035	268	1412,-	1059,-
1035*	1020-1050	298	1452,-	1089,-
1050	1036-1065	298	1452,-	1089,-
1065*	1050-1080	298	1452,-	1089,-
1080	1066-1095	298	1452,-	1089,-
1110	1096-1125	328	1612,-	1209,-
1140	1126-1155	328	1612,-	1209,-
1160	1146-1175	328	1612,-	1209,-
Easy-Lock stormstraps Patio; sidewall; 2-straps				24,95
Easy-Lock stormstraps Patio; front; 3-straps				33,95
Curtains				49,-

\*Walker factory tailored sizes

Walker collection 2025



Castel with sidewall with window



**NOW FROM**  
**£ 369,-**

The Castel front suncanopy is specially designed to fit the Walker awnings and made of Ten Cate All Season coated polyester 240 g/m<sup>2</sup>. Supplied complete with a steel frame and a depth of 230 cm the Castel is fastened under the canopy of your awning. For extra shelter, sides with window can be purchased as an optional extra. They fit both the left and right-hand side of the front sun canopy and are available in the colours of the awning.

For use of the Castel on a Pioneer: use the special 'adapterset': £ 30,-

**Plus-package** Castel provided with tentrail and 3 poles with a hook for mounting the Castel on the caravan directly! (sidewalls cannot be used when the Castel is put on the caravan directly)

**Easy Powergrips optional on steel frame at extra costs:**

Type	Easy PowerGrips	Extra costs
795 - 1080	8 pcs.	£ 44,-

Go to website...



**Castel steel frame**

Type	A-measurement (cm)	A-B in cm	List Price £	DISCOUNT PRICE £
795*	780-810	178	492,-	369,-
810	796-825	178	492,-	369,-
825*	810-840	193	519,-	389,-
840	826-855	193	519,-	389,-
855*	840-870	208	546,-	409,-
870	856-885	208	546,-	409,-
885*	870-900	223	559,-	419,-
900	886-915	223	559,-	419,-
915*	900-930	238	572,-	429,-
930	916-945	238	572,-	429,-
945*	930-960	253	586,-	439,-
960	946-975	253	586,-	439,-
975*	960-990	268	599,-	449,-
990	976-1005	268	599,-	449,-
1005*	990-1020	268	599,-	449,-
1020	1006-1035	268	599,-	449,-
1035*	1020-1050	298	612,-	459,-
1050	1036-1065	298	612,-	459,-
1065*	1050-1080	298	612,-	459,-
1080	1066-1095	298	612,-	459,-
Extra costs Castel-Plus			92,-	79,-
Sidewall with window for Castel			106,-	89,-
Easy-Lock stormstraps Castel; 3-straps			-	33,95

\*Walker factory tailored sizes

**Solair 4/1**

The canopy Solair 4/1 is a very ingenious canopy. You have 4 options:

- 1: Straight to the caravan
- 2: On the back of the caravan as a cover
- 3: Freestanding as a sun canopy or windbreak
- 4: To be connected to the side of the awning, onto the channel where you can fit the raingutter

**Included:** 2 steel uprights, pegs, guy ropes and coupling + channel for fastening to either side of the awning. Size: 240 cm wide and 200 cm deep.

List Price £	DISCOUNT PRICE £
146,-	109,-

Go to website...





# Weekender 240



NOW FROM  
£ 769,-

Go to website...



# Active



Very quick and easy to erect!

Includes two zip-out side walls



Lightweight sun canopy,  
easy to erect!



Walker Active  
inflatable sun canopy.

### FEATURES WEEKENDER 240

- Depth:** 240 cm • **Roof:** Ten Cate All Season coated polyester: 260 g/m<sup>2</sup>
- Walls:** Ten Cate All Season coated polyester: 260 g/m<sup>2</sup>
- Frame:** steel 22 mm; optional with Easy-PowerGrips at extra costs
- Optional:** 28 mm alloy frame with Easy PowerGrips
- Panels:** can be zipped out
- Easy-Setup lock brackets:** included!
- Draught cloth + wheel arch cover:** included!
- Luxury accessory bag:** included!
- Guarantee:** 24 months
- Fits aerodynamic shaped caravans**
- Weight:** size 900 approx. 26 kg

### Easy Powergrips optional on steel frame at extra costs:

Type	Easy PowerGrips	Extra costs
780 - 1020	8 pcs.	£ 44,-

### ALSO AVAILABLE FOR (alloy frame):

	List Price £	DISCOUNT PRICE £
ERIBA FEELING 380/425/430/450:	1266,-	949,-
ERIBA FEELING 470:	1346,-	1009,-
ERIBA FEELING 442:	1386,-	1039,-
Dripstop for Feeling:		76,-
TRIGANO SILVER 420/430/		
TREND 420/TREND 442	1266,-	949,-

### Weekender 240, steel frame

Type	A-measurement (cm)	List Price £	DISCOUNT PRICE £
780	766-795	1026,-	769,-
795*	780-810	1039,-	779,-
810	796-825	1039,-	779,-
825*	810-840	1066,-	799,-
840	826-855	1066,-	799,-
855*	840-870	1092,-	819,-
870	856-885	1092,-	819,-
885*	870-900	1119,-	839,-
900	886-915	1119,-	839,-
915*	900-930	1146,-	859,-
930	916-945	1146,-	859,-
945*	930-960	1172,-	879,-
960	946-975	1172,-	879,-
975*	960-990	1186,-	889,-
990	976-1005	1186,-	889,-
1005*	990-1020	1212,-	909,-
1020	1006-1035	1212,-	909,-
Extra costs alloy 780-870		150,-	112,-
Extra costs alloy 885-960		168,-	126,-
Extra costs alloy 975-1020		182,-	136,-
Easy-Lock stormstraps 2 pcs.		-	24,95

\*Walker factory tailored sizes

The Walker Active is your quick to erect air sun canopy.

It has a depth of 240 cm.

The front air bow is connected with the middle roof tube. **There is 1 inflation point.**

Both sidewalls can be zipped out.

Standard supplied with an air pump and 2 steel upright steel poles to push the sidewalls against the caravan

For caravans with a height between 235 - 255 cm.

### Available in 4 widths:

- 290 cm (also fits Knaus Sport & Fun, Hobby Beachy 360/420/450 and Carpento 410 caravans)
- 330 cm (also fits Hobby Beachy 450 caravans)
- 400 cm
- 500 cm

### FEATURES ACTIVE 330/400/500

**Depth:** 240 cm

**Panels:** can be zipped out

**Weight:** Active 330 approx. 16 kg;

Active 400 approx. 18 kg; Active 500 approx. 19 kg

**Standard supplied with:** Air pump, 2 steel upright steel poles to push the sidewalls against the caravan, guy ropes

- Jolax awning carpet - Special Discount! (page 22)



Active 400



Active 330



Active 330

### Inflatable canopy Active

Type	List Price £	DISCOUNT PRICE £
Active 290	879,-	659,-
Active 330	892,-	669,-
Active 400	959,-	719,-
Active 500	1012,-	759,-

Go to website...





# Kip Kompakt/Vision



Go to website...



Kompakt



Go to website...



Vision

## Especially for Kip Kompakt and Kip Vision

- Exclusively for the Kip Kompakt/Vision
- Can be used as either canopy or full awning; all panels can be zipped out
- Easy to erect with Easy-Setup lock brackets
- Roof: Ten Cate All Season coated polyester: 260 g/m<sup>2</sup>
- Panels: Ten Cate All Season coated polyester: 260 g/m<sup>2</sup>
- Depth: 240 cm
- 28 mm alloy frame with Easy-Powergrips included
- Draught cloth + wheel arch cover and curtains included
- Luxury accessory bag included
- Weight: 25 kg
- **Jolax awning carpet - Special Discount!** (page 22)

### Kompakt/Vision alloy frame

Type	List Price £	DISCOUNT PRICE £
<b>Kompakt</b>	1812,-	<b>1359,-</b>
<b>Vision</b>	1932,-	<b>1449,-</b>
Easy-Lock stormstraps, 2 pcs.		<b>24,95</b>

# T@B



Go to website...



## Awning especially for T@B 320 and T@B 400

- Exclusively for T@B 320 and T@B 400
- Can be used as either canopy or full awning
- Front panels and right panel can be zipped out
- Roof: Ten Cate All Season coated polyester: 260 g/m<sup>2</sup>
- Panels: Ten Cate All Season coated polyester: 260 g/m<sup>2</sup>
- Depth: 240 cm
- 28 mm alloy frame with Easy-PowerGrips included
- Draught cloth + wheel arch cover and curtains included
- Luxury accessory bag included
- Weight: T@B 320 approx 21 kg / T@B 400 approx 25 kg
- Guarantee: 24 months
- **Jolax awning carpet - Special Discount!** (page 22)



Ventilation: in frontwall

### T@B alloy frame

Type	List Price £	DISCOUNT PRICE £
<b>T@B 320</b>	1972,-	<b>1479,-</b>
<b>T@B 400</b>	2026,-	<b>1519,-</b>
Easy-Lock stormstraps, 2 pcs.		<b>24,95</b>



# Knaus Sport & Fun



Go to website...



## Especially for Knaus Sport & Fun

- Exclusively for Knaus Sport&Fun
- Can be used as either canopy or full awning
- All panels can be zipped out
- Roof: Ten Cate All Season coated polyester: 260 g/m<sup>2</sup>
- Panels: Ten Cate All Season coated polyester: 260 g/m<sup>2</sup>
- Depth: 240 cm
- 28 mm alloy frame with Easy-PowerGrips included
- Draught cloth + wheel arch cover and curtains included
- Luxury accessory bag included
- Weight: approx 29 kg
- Guarantee: 24 months
- **Jolax awning carpet - Special Discount!** (page 22)

### Sport & Fun aluminium frame

Type	List Price £	DISCOUNT PRICE £
<b>Sport &amp; Fun</b>	1999,-	<b>1499,-</b>
Easy-Lock stormstraps, 2 pcs.		<b>24,95</b>

## Inflatable Sun Canopy for T@B 320 and T@B 400!

The Walker Sunflexx is an inflatable sun canopy which makes it easy and quick to erect!

The Sunflexx has a depth of 240cm. Both sides have a big panorama window and can be rolled up!

The fresh anthracite colour scheme and innovative design make the Sunflexx very attractive! An air pump is included!

Sunflexx-320: for T@B 320 / weight 7,5 kg  
Sunflexx-400: for T@B 400 / weight 8,5 kg

- **Jolax awning carpet - Special Discount!** (page 22)

### Sunflexx inflatable Sun Canopy

Type	List Price £	DISCOUNT PRICE £
<b>Sunflexx T@B 320</b>	732,-	<b>549,-</b>
<b>Sunflexx T@B 400</b>	786,-	<b>589,-</b>



Both sides have a big panorama window and can be rolled up.

Go to website...







Ondersteuning dakpunt

Go to website...



## Especially for Eriba Touring\* and Trigano Silver

The **Touring-Plus** has a specially designed 28 mm aluminium frame which makes it possible for you to stand up straight under the roof.

\* For the **Eriba Touring 630/642** caravan the **Walker Pioneer 240** awning is possible. See page 4.

### FEATURES TOURING PLUS

**Roof:** Ten Cate All Season coated polyester: 260 g/m<sup>2</sup>

**Walls:** Ten Cate All Season coated polyester: 260 g/m<sup>2</sup>

**Frame:** 28 mm alloy frame with Easy-Powergrip

**Ventilation:** in the ridge to the front and in 1 sidewall

**Panels:** can be zipped out

**Easy-Setup lock brackets:** included!

**Curtains, draught cloth + wheel**

### OPTIONAL EXTRAS

- Easy-Lock stormstraps (awning: 2-straps)
- **Jolax awning carpet - Special Discount!** (page 22)
- Annexe De Luxe with door: fits both sides
- Innertent for annexe
- Windbreak WS-7
- Awning lampshade, tablecloth

### Touring-Plus alloy frame

Type	List Price £	DISCOUNT PRICE £
Touring-Plus tbv <b>Familia, Puck L, Puck 230</b>	1865,-	<b>1399,-</b>
Touring-Plus for <b>Triton</b>	1932,-	<b>1449,-</b>
Touring-Plus for <b>Troll</b>	1986,-	<b>1489,-</b>
Touring-Plus for <b>Trigano Silver 290/Mini Freestyle 290</b>	2039,-	<b>1529,-</b>
Touring-Plus for <b>Trigano Silver 310 + 340</b>	2039,-	<b>1529,-</b>
Touring-Plus for <b>Trigano Silver 380/Silver Evasion 390 CP-TDE/Mini Freestyle 390/Trend 350/Trend 380</b>	2159,-	<b>1619,-</b>
Easy-Lock stormstraps, 2 pcs.	-	<b>24,95</b>
Annexe De Luxe	746,-	<b>559,-</b>
Innertent for annexe	146,-	<b>109,-</b>



## Awnings and inflatable sun canopy for Hobby Beachy

### Awnings Dynamic and Scandic 300



These awnings are supplied with a special frame.

This frame is possible in steel or in fiberglass.

Go to website...



For the **Hobby Beachy 360** and the **Hobby Beachy 420** the **Walker Dynamic 250** (see page 5) possible.

For the **Hobby Beachy 450** and the **Walker Dynamic 250** (see page 5) and **Walker Scandic 300** (see page 7) possible.

	List Price £	Disc. Price £		List Price £	Disc. Price £
<b>Walker Dynamic 250</b>			<b>Walker Scandic 300</b>		
Hobby Beachy 360 steel MAX:	2106,-	<b>1579,-</b>	Hobby Beachy 450 steel MAX:	2466,-	<b>1849,-</b>
Hobby Beachy 360 fiber MAX:	2399,-	<b>1799,-</b>	Hobby Beachy 450 fiber MAX:	2755,-	<b>2066,-</b>
Hobby Beachy 420 steel MAX:	2226,-	<b>1669,-</b>			
Hobby Beachy 420 fiber MAX:	2519,-	<b>1889,-</b>			
Hobby Beachy 450 steel MAX:	2332,-	<b>1749,-</b>			
Hobby Beachy 450 fiber MAX:	2626,-	<b>1969,-</b>			



### Inflatable sun canopy Active



**Walker Active inflatable sun canopy** for Hobby Beachy.

The Walker Active is your quick to erect air sun canopy! (see page 13)

For the **Hobby Beachy 360/420/450** the **Walker Active 290** is possible.

For the **Hobby Beachy 450** is the **Walker Active 290** and also the **Walker Active 330** possible.

	List Price £	Disc. Price £
<b>Walker Active 290</b>		
Hobby Beachy 360/420/450:	879,-	<b>659,-</b>
<b>Walker Active 330</b>		
Hobby Beachy 450:	892,-	<b>669,-</b>





**UK version available!**



**Ventilation:**  
in frontwall

## Awning especially for Adria Action 341/361

- Exclusively for Adria Action 341/361
- **UK version available**
- Can be used as either canopy or full awning
- All panels can be zipped out
- Easy to erect with Easy-Setup lock brackets
- Roof: Ten Cate All Season coated polyester: 260 g/m<sup>2</sup>
- Panels: Ten Cate All Season coated polyester: 260 g/m<sup>2</sup>
- Depth: 240 cm
- 28 mm alloy frame with Easy-PowerGrips
- Draught cloth + wheel arch cover and curtains included
- Luxury accessory bag included
- Weight: approx. 25 kg
- Guarantee: 24 months
- **Jolax awning carpet - Special Discount!** (page 22)



The Action is available for **type 361** but also for **type 341**.

### Action 341/361 aluminium frame

Type	List Price £	DISCOUNT PRICE £
<b>Action 341/361</b>	2026,-	<b>1519,-</b>
Easy-Lock stormstraps, 2 pcs.		<b>24,95</b>

Go to website...



## Awning especially for Adria Action 391 PD/PH-LH

- Exclusively for Adria Action 391
- Can be used as either canopy or full awning
- All panels can be zipped out
- Easy to erect with Easy-Setup lock brackets
- Roof: Ten Cate All Season coated polyester: 260 g/m<sup>2</sup>
- Panels: Ten Cate All Season coated polyester: 260 g/m<sup>2</sup>
- Depth: 240 cm
- 28 mm alloy frame with Easy-PowerGrips
- Draught cloth + wheel arch cover and curtains included
- Luxury accessory bag included
- Weight: approx. 27 kg
- Guarantee: 24 months



**Ventilation:**  
in frontwall



Go to website...



### Action 391 alloy frame

Type	List Price £	DISCOUNT PRICE £
<b>Action 391</b>	1999,-	<b>1499,-</b>
Easy-Lock stormstraps, 2 pcs.		<b>24,95</b>

Always indicate the correct type 391;  
PD or PH/LH (indicate if it is an Adria Action 391 LH Sport)





Go to website...



## Winter porch

### FEATURES SNOW & FUN PLUS

**Depth:** 180 cm • **Width:** 240 cm • **Roof:** heavy duty PVC  
**Walls:** heavy duty PVC • **Entrance in both sides**  
**Frame:** steel, Zinox 25 mm • **Ventilation:** at both sides of the roof; can be closed • **Weight:** approx. 28 kg  
**Easy-Setup lock brackets:** included! • **Curtains, Draught cloth + wheel arch cover:** included! • **Luxury accessory bag:** included! • **Guarantee:** 24 months

### Snow & Fun Plus

Type	List Price £	DISCOUNT PRICE £
<b>Snow &amp; Fun Plus</b>	906,-	<b>679,-</b>
Safety set steel	119,-	<b>89,-</b>
Inner roof	106,-	<b>79,-</b>
Easy-Lock stormstraps, 2 pcs.		<b>24,95</b>

Snow&Fun Plus also available for :

Bürstner Averso Plus, Bürstner Premio Plus, Dethleffs c'go UP, Eriba Living 555 XL, LMC Style Lift, Weinsberg CaraOne 390 PUH/540 EUH

List Price £	DISCOUNT PRICE £
1012,-	<b>759,-</b>

## Maxi 300/380



## Porches



Maxi 300



Maxi 380

### FEATURES MAXI 300/380

**Depth Maxi 300/ 380:** 235 cm • **Width Maxi 300:** 310 cm • **Width Maxi 380:** 385 cm • **Roof:** Ten Cate All Season coated polyester: 260 g/m<sup>2</sup>

**Walls:** Ten Cate All Season coated polyester: 260 g/m<sup>2</sup>

**Frontwall Maxi 300 /380** can be zipped out; 2 panels • **Entrance in both sides**

**Frame:** steel 25 mm; optional with Easy-PowerGrips at extra costs

**Weight Maxi 300 steel:** approx. 30 kg • **Weight Maxi 380 steel :** approx. 35 kg

**Easy-Setup lock brackets:** included! • **Curtains, Draught cloth + wheel arch cover:** included! • **Luxury accessory bag:** included! • **Guarantee:** 24 month

### OPTIONAL EXTRAS

- Easy-Lock stormstraps
- Jolax awning carpet - **Special Discount!** (page 22)
- Window canopy
- Awning lampshade, tablecloth
- Safety set steel
- Inner roof
- Windbreak WS-1

Go to website...



### Maxi 300/380

Type	List Price £	DISCOUNT PRICE £
<b>Maxi 300 staal</b>	1572,-	<b>1179,-</b>
Safety set steel Maxi 300	199,-	<b>149,-</b>
<b>Maxi 300 alloy</b>	1692,-	<b>1269,-</b>
Inner roof Maxi 300	132,-	<b>99,-</b>
<b>Maxi 380 steel</b>	1692,-	<b>1269,-</b>
Safety set steel Maxi 380	199,-	<b>149,-</b>
<b>Maxi 380 alloy</b>	1799,-	<b>1349,-</b>
Inner roof Maxi 380	146,-	<b>109,-</b>
Easy-Lock stormstraps, 2 pcs.		<b>24,95</b>

PowerGrips on steel frame; optional: £ 66,-

## Annexe/Innertent



Go to website...



**Annexe De Luxe for Concept, Fusion, Dynamic, Ellips, Allure, Scandic, Atrium, Palladium, Touring-Plus (from 2020).**

Provided with an extra door and fly screen panel. All Walker annexes are equipped with an extra zip, so the awning's side panel can be used as a partition wall.

**Measurements (cm):** 215(w) x 140(d) x 175(h).

**Weight:** 15 kg.



Innertent annexe (optional)

### Annexe De Luxe

Type	List Price £	DISCOUNT PRICE £
<b>Annexe De Luxe</b>	746,-	<b>559,-</b>
Innertent annexe	146,-	<b>109,-</b>

## Windbreaks



WS-1



WS-5



WS-7

### Windbreaks in the colours of the awning!

**WS-1** - in the colours of Walker Scandic 300, Atrium 300, Palladium 350 and Maxi 300/380

**WS-5** - PVC / in the colours of Walker Concept 240/280

**WS-7** - in the colours of Walker Pioneer 240, Dynamic 250, Ellips 280, Touring-Plus

**Windbreaks 150 cm high!**  
450 cm long / Weight: 10 kg.

List Price £ 319,-

**DISCOUNT PRICE £ 239,-**

Go to website...





# WHY NOT COMPLETE YOUR NEW WALKER AWNING

## WITH A JOLAX AWNING CARPET!

Go to website...



**-25%  
jolaX  
action** AWNING+CARPET =  
Discount of 25% on  
the Jolax carpet



Buy a **JOLAX awning carpet** and we'll give you a **luxury carpet carrier completely FREE\***

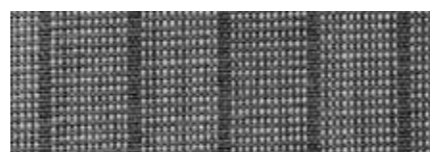
Makes transport so easy and keeps your carpet in peak condition when not in use

\* not for size 250x150 cm en 250x200 cm

We offer you the choice of 2 Jolax designs:



• **Light grey/dark grey/blue**



• **Dark grey/anthracite**

### JOLAX SIZES AND PRICES (DEPTH 280 CM ONLY AVAILABLE IN DARK GREY/LIGHT GREY!)

Type	depth 250 cm		depth 280 cm		depth 300 cm		depth 350 cm	
	carpet £	awning+carpet: carpet £	carpet £	awning+carpet: carpet £	carpet £	awning+carpet: carpet £	carpet £	awning+carpet: carpet £
780-810 = 440 cm	135,-	101,-	-	-	-	-	-	-
825-870 = 500 cm	146,-	109,-	158,-	118,-	172,-	129,-	219,-	164,-
885-930 = 560 cm	167,-	125,-	182,-	136,-	192,-	144,-	242,-	181,-
945-1020 = 620 cm	184,-	138,-	199,-	149,-	211,-	158,-	264,-	198,-
1035-1080 = 680 cm	194,-	145,-	219,-	164,-	232,-	174,-	287,-	215,-
1110-1160 = 740 cm	222,-	166,-	236,-	177,-	246,-	184,-	314,-	235,-

### JOLAX SIZES AND PRICES SPECIAL MODELS

Type	measurement (cm)	carpet £	awning+carpet: carpet £
Annexe	250 x 150	47,-	35,-
Snow & Fun Plus (only available in anthracite)	250 x 200	54,-	40,-
Touring-Plus Familia, Maxi 300, Silver Mini freestyle 290, Active 290	250 x 310	82,-	61,-
Touring-Plus Triton, Troll, Eriba Feeling 230, Trigano Silver 310/340/350/380/390, Maxi 380, Kip Shelter, T@B 320, Active 330, Sunflexx 320	250 x 390	103,-	77,-
Adria Action 361/341, T@B 400, Active 400, Sunflexx 400/361	250 x 440	135,-	101,-
Kip Kompakt, Eriba Feeling 380/425/430/450, Eriba Touring 630, Trigano Silver 420/430//442, Knaus Sport&Fun, Action 391, Active 500, Sunflexx 391	250 x 500	146,-	109,-
Kip Vision, Eriba Feeling 442/470	250 x 560	167,-	125,-

# Accessories

Go to website...



## • Curtains

Curtain fabrics WD7, WD11 and WD12.  
The fabric is also available separately.

## • Easy-Lock stormstraps

2-straps for awning/suncanopy Patio  
3-straps for suncanopy Castel/Patio

Discount Price **£ 24,95**

Discount Price **£ 33,95**

## • Window canopy

Includes an aluminium telescopic frame.  
Size 190 x 80 cm

Discount Price **£ 109,-**

## • Lampshade

Walker lampshade in the same colour as the curtains of your awning:  
WD7, WD11 and WD12

Discount Price **£ 45,-**

## • Annexe inertent

For each annexe there is an inertent available with a ground size of 205 x 135 cm. All Walker annexes are equipped with an extra zip, so the awning's side panel can be used as a partition wall

Discount Price **£ 109,-**

## • Tablecloth 160 x 110 cm

Dessins: WD7, WD11 and WD12

Discount Price **€ 17,50**

## • Verandah Pole

- Steel type 780-870
- Steel type 885-960
- Steel type 975-1080
- Alloy type 780-870
- Alloy type 885-960
- Alloy type 975-1080
- Fiberglass type 780-870
- Fiberglass type 885-960
- Fiberglass type 975-1080

Discount Price **£ 22,-**

Discount Price **£ 24,-**

Discount Price **£ 29,-**

Discount Price **£ 26,-**

Discount Price **£ 33,-**

Discount Price **£ 43,-**

Discount Price **£ 43,-**

Discount Price **£ 47,-**

Discount Price **£ 58,-**

## • Tailored draught cloth+weel arch cover Discount Price **£ 75,-**



Annexe inertent



Curtains WD7, WD11 and WD12



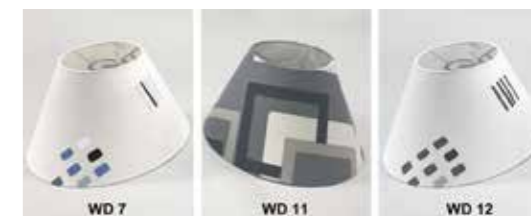
Easy-Lock stormstraps 2-straps



Easy-Lock stormstraps 3-straps



Window canopy



Lampshade







walker®  
Campingstyle



[www.walker-awnings.uk](http://www.walker-awnings.uk)

Walker uses only the very best materials supplied by the following leading producers for the camping industry:



Dealer:

Prices in £ / Pound Sterling / including VAT.  
Walker reserves the right to alter specifications without prior notice.



**Walker Campingstyle B.V.**  
P.O. Box 65  
5750 AB Deurne  
The Netherlands  
Tel: +31 (0)493 314828  
info@walker.nl  
www.walker-awnings.uk

Go to website...



How does QR code work on phone?

Scan a QR code with an iPhone or Android device like this:

1. Open the Camera app.  
So aim the camera at the QR code.
2. Pretend to take a picture of the QR code.  
Visualize the QR code in full.
3. The QR code will appear on the screen.  
Visualize the QR code in full.
4. A message will appear to inform the underlying site of the QR code.